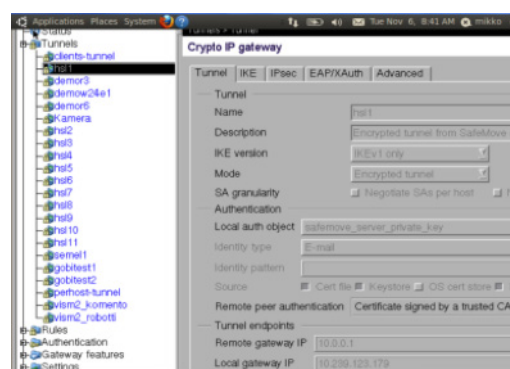
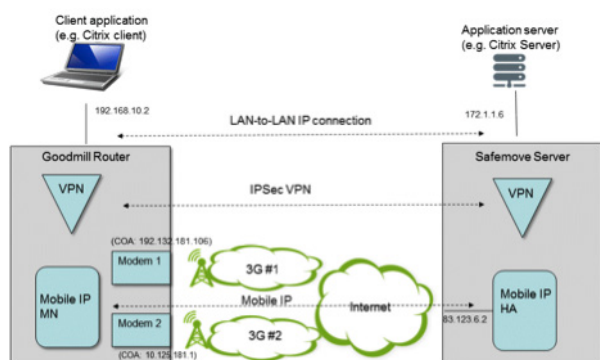


Goodmill Multichannel Router Solution Safemove Server

The Goodmill SafeMove server is the back end system of the Goodmill Multichannel Router solution for implementing Mobile IP and VPN GW functionality within the Goodmill Multi Channel Router solution.

The SafeMove server, together with Mobile IP and VPN functionality in a router, provides security and session persistence for applications connected to a Goodmill Router for reaching their respective application servers.

The practical benefit of session persistence is that underlying mobile networks become invisible to applications and the solution provides a “static” LAN-to-LAN connection for avoiding unnecessary multiple logins of e.g. Citrix sessions.



SafeMove Server provides a graphical user interface for configuring the VPNs between SafeMove server and Goodmill router or SafeMove clients.

THE MAIN BENEFITS

Higher availability and user satisfaction

- Session persistence for applications connected to Goodmill Routers
- Fast switching between networks through efficient Mobile IP renegotiation

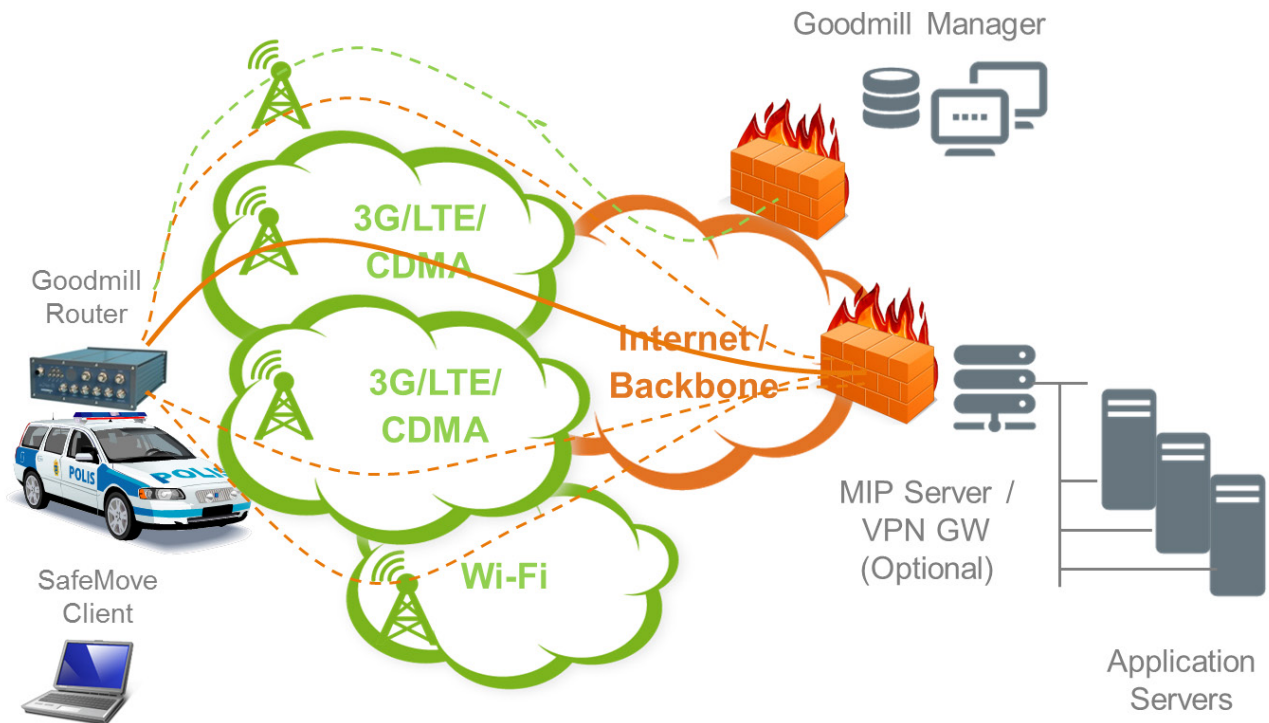
Strong data security

- Strong authentication
- FIPS-140-2 based encryption

Cost efficient scalability

- Geo redundancy
- Load balancing

GOODMILL SAFEMOVE SERVER OVERVIEW



SAFEMOVE SERVER FEATURES

Session persistence	IPsec VPN and Mobile IP enables application sessions to be maintained during network switching or even during gaps in coverage
Security	<ul style="list-style-type: none"> • IKE • Certificates • FIPS 140-2 encryption • Geo redundancy
Scalability	<ul style="list-style-type: none"> • Load balancing • Clustering
Graphical User Interface	VPN Configuration and routing
Zero-click connectivity	Automatic switching between networks without user involvement
Standards based	Implementation is based on approved standards which enables easy 3 rd party integration
Support for virtualized environment	Software can be installed in a virtualized environment in all configurations
System requirements	<ul style="list-style-type: none"> • SafeMove server appliance • VMware virtual appliance • Red Hat Enterprise Linux 5 certified hardware

GOODMILL
Always online

Manufactured by
Goodmill Systems Ltd.
Sinikalliontie 10
FI-02630 Espoo • Finland

sales@goodmillsystems.com
www.goodmillsystems.com